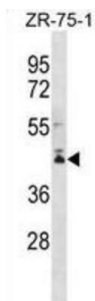


Protein-L-Isoaspartate O-Methyltransferase Domain-Containing Protein 2 (PCMTD2) Antibody

Catalogue No.: abx030352



PCMTD2 belongs to the L-isoaspartyl/D-aspartyl protein methyltransferase family. There are 3 named isoforms produced by alternative splicing.

Target:	Protein-L-Isoaspartate O-Methyltransferase Domain-Containing Protein 2 (PCMTD2)
Clonality:	Polyclonal
Reactivity:	Human
Tested Applications:	ELISA, WB
Host:	Rabbit
Recommended dilutions:	WB: 1/1000. Optimal dilutions/concentrations should be determined by the end user.
Conjugation:	Unconjugated
Immunogen:	KLH-conjugated synthetic peptide between 251-278 amino acids from the C-terminal region of human PCMTD2.
Isotype:	IgG
Form:	Liquid
Purification:	Purified through a protein A column, followed by peptide affinity purification.
Storage:	Aliquot and store at -20°C. Avoid repeated freeze/thaw cycles.
UniProt Primary AC:	Q9NV79 (UniProt , ExPASy)
Gene Symbol:	PCMTD2

Datasheet

Version: 3.0.0

Revision date: 20 Aug 2025



String: [9606.ENSF00000307854](#)

Molecular Weight: Calculated MW: 41.1 kDa

Buffer: PBS containing 0.09% sodium azide.

Specificity: Predicted to react with Cow PCMTD2.

Note: THIS PRODUCT IS FOR RESEARCH USE ONLY. NOT FOR USE IN DIAGNOSTIC, THERAPEUTIC OR COSMETIC PROCEDURES. NOT FOR HUMAN OR ANIMAL CONSUMPTION.

For Reference Only