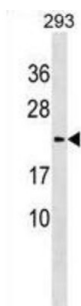


## Lysozyme-Like Protein 1 (LYZL1) Antibody

Catalogue No.: abx030379



LYZL1 is involved in the hydrolysis of 1, 4-beta-linkages between N-acetylmuramic acid and N-acetyl-D-glucosamine residues in a peptidoglycan and between N-acetyl-D-glucosamine residues in chitodextrins.

**Target:** Lysozyme-Like Protein 1 (LYZL1)

**Clonality:** Polyclonal

**Reactivity:** Human

**Tested Applications:** ELISA, WB

**Host:** Rabbit

**Recommended dilutions:** WB: 1/1000. Optimal dilutions/concentrations should be determined by the end user.

**Conjugation:** Unconjugated

**Immunogen:** KLH-conjugated synthetic peptide between 119-144 amino acids from the C-terminal region of human LYZL1.

**Isotype:** IgG

**Form:** Liquid

**Purification:** Purified through a protein A column, followed by peptide affinity purification.

**Storage:** Aliquot and store at -20°C. Avoid repeated freeze/thaw cycles.

**UniProt Primary AC:** Q6UWQ5 ([UniProt](#), [ExPASy](#))

**Gene Symbol:** LYZL1

# Datasheet

Version: 2.0.0

Revision date: 02 Jun 2025



**KEGG:** hsa:84569

**String:** [9606.ENSP00000364650](#)

**Molecular Weight:** Calculated MW: 16.7 kDa

**Buffer:** PBS containing 0.09% sodium azide.

**Specificity:** Predicted to react with Cow LYZL1.

**Note:** THIS PRODUCT IS FOR RESEARCH USE ONLY. NOT FOR USE IN DIAGNOSTIC, THERAPEUTIC OR COSMETIC PROCEDURES. NOT FOR HUMAN OR ANIMAL CONSUMPTION.

For Reference Only