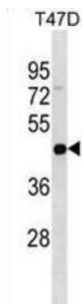


Interleukin 22 Receptor Alpha 2 (IL22RA2) Antibody

Catalogue No.: abx030406



The protein encoded by this gene is a soluble class II cytokine receptor. This protein has been shown to specifically bind to interleukin 22 (IL22), block the interaction of IL22 with its cell surface receptor, and thus inhibit IL22 activity. This protein functions as an IL22 antagonist, and may be important in the regulation of inflammatory response. Three alternatively spliced transcript variants encoding distinct isoforms have been described.

Target:	Interleukin 22 Receptor Alpha 2 (IL22RA2)
Clonality:	Polyclonal
Reactivity:	Human
Tested Applications:	ELISA, WB
Host:	Rabbit
Recommended dilutions:	WB: 1/1000. Optimal dilutions/concentrations should be determined by the end user.
Conjugation:	Unconjugated
Immunogen:	KLH-conjugated synthetic peptide between 15-42 amino acids from the N-terminal region of human IL22RA2.
Isotype:	IgG
Form:	Liquid
Purification:	Purified through a protein A column, followed by peptide affinity purification.
Storage:	Aliquot and store at -20°C. Avoid repeated freeze/thaw cycles.
UniProt Primary AC:	Q969J5 (UniProt , ExPASy)
Molecular Weight:	Calculated MW: 30.6 kDa

Datasheet

Version: 1.0.0

Revision date: 21 Jun 2025



Buffer: PBS containing 0.09% sodium azide.

Note: THIS PRODUCT IS FOR RESEARCH USE ONLY. NOT FOR USE IN DIAGNOSTIC, THERAPEUTIC OR COSMETIC PROCEDURES. NOT FOR HUMAN OR ANIMAL CONSUMPTION.

For Reference Only