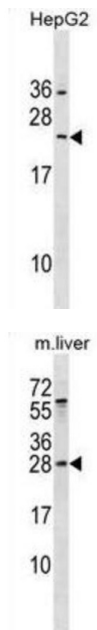


RAB5B, Member RAS Oncogene Family (RAB5B) Antibody

Catalogue No.: abx030408



Protein transport. Probably involved in vesicular traffic (By similarity).

Target:	RAB5B, Member RAS Oncogene Family (RAB5B)
Clonality:	Polyclonal
Reactivity:	Human, Mouse
Tested Applications:	ELISA, WB
Host:	Rabbit
Recommended dilutions:	WB: 1/1000. Optimal dilutions/concentrations should be determined by the end user.
Conjugation:	Unconjugated
Immunogen:	KLH-conjugated synthetic peptide between 85-112 amino acids from the Central region of human RAB5B.
Isotype:	IgG
Form:	Liquid
Purification:	Purified through a protein A column, followed by peptide affinity purification.

Datasheet

Version: 2.0.0

Revision date: 18 Aug 2025



Storage: Aliquot and store at -20°C. Avoid repeated freeze/thaw cycles.

UniProt Primary AC: P61020 ([UniProt](#), [ExPASy](#))

KEGG: hsa:5869

String: [9606.ENSP00000353444](#)

Molecular Weight: Calculated MW: 23.7 kDa

Buffer: PBS containing 0.09% sodium azide.

Specificity: Predicted to react with Chicken RAB5B.

Note: THIS PRODUCT IS FOR RESEARCH USE ONLY. NOT FOR USE IN DIAGNOSTIC, THERAPEUTIC OR COSMETIC PROCEDURES. NOT FOR HUMAN OR ANIMAL CONSUMPTION.

For Reference Only