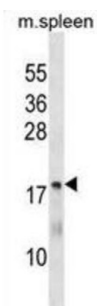


Methenyltetrahydrofolate Synthetase (MTHFS) Antibody

Catalogue No.: abx030434



MTHFS contributes to tetrahydrofolate metabolism. Helps regulate carbon flow through the folate-dependent one-carbon metabolic network that supplies carbon for the biosynthesis of purines, thymidine and amino acids.

| | |
|-------------------------------|---------------------------------------------------------------------------------------------------------|
| Target: | Methenyltetrahydrofolate Synthetase (MTHFS) |
| Clonality: | Polyclonal |
| Reactivity: | Human, Mouse |
| Tested Applications: | ELISA, WB |
| Host: | Rabbit |
| Recommended dilutions: | WB: 1/1000. Optimal dilutions/concentrations should be determined by the end user. |
| Conjugation: | Unconjugated |
| Immunogen: | KLH-conjugated synthetic peptide between 133-159 amino acids from the C-terminal region of human MTHFS. |
| Isotype: | IgG |
| Form: | Liquid |
| Purification: | Purified through a protein A column, followed by peptide affinity purification. |
| Storage: | Aliquot and store at -20°C. Avoid repeated freeze/thaw cycles. |
| UniProt Primary AC: | P49914 (UniProt , ExPASy) |
| KEGG: | hsa:10588 |

Datasheet

Version: 1.0.0

Revision date: 23 Jun 2025



String: [9606.ENSF00000258874](#)

Molecular Weight: Calculated MW: 23.3 kDa

Buffer: PBS containing 0.09% sodium azide.

Note: THIS PRODUCT IS FOR RESEARCH USE ONLY. NOT FOR USE IN DIAGNOSTIC, THERAPEUTIC OR COSMETIC PROCEDURES. NOT FOR HUMAN OR ANIMAL CONSUMPTION.

For Reference Only