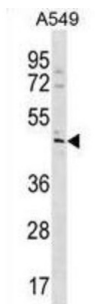


## TBC1 Domain Family Member 20 (TBC1D20) Antibody

Catalogue No.: abx030467



TBC1D20 may act as a GTPase-activating protein for Rab family protein (s).

**Target:** TBC1 Domain Family Member 20 (TBC1D20)

**Clonality:** Polyclonal

**Reactivity:** Human

**Tested Applications:** ELISA, WB

**Host:** Rabbit

**Recommended dilutions:** WB: 1/1000. Optimal dilutions/concentrations should be determined by the end user.

**Conjugation:** Unconjugated

**Immunogen:** KLH-conjugated synthetic peptide between 335-363 amino acids from the C-terminal region of human TBC1D20.

**Isotype:** IgG

**Form:** Liquid

**Purification:** Purified through a protein A column, followed by peptide affinity purification.

**Storage:** Aliquot and store at -20°C. Avoid repeated freeze/thaw cycles.

**UniProt Primary AC:** Q96BZ9 ([UniProt](#), [ExPASy](#))

**KEGG:** hsa:128637

**String:** [9606.ENSP00000346139](#)

# Datasheet

Version: 2.0.0

Revision date: 19 Sep 2025



**Molecular Weight:** Calculated MW: 45.9 kDa

**Buffer:** PBS containing 0.09% sodium azide.

**Note:** THIS PRODUCT IS FOR RESEARCH USE ONLY. NOT FOR USE IN DIAGNOSTIC, THERAPEUTIC OR COSMETIC PROCEDURES. NOT FOR HUMAN OR ANIMAL CONSUMPTION.

For Reference Only