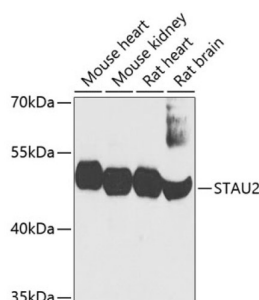
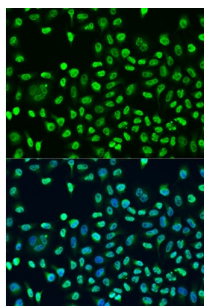


Staufen Double-Stranded RNA Binding Protein 2 (STAU2) Antibody

Catalogue No.: abx002447



Western blot analysis of extracts of various cell lines using STAU2 Antibody (1/1000 dilution).



Immunofluorescence analysis of U2OS cells using STAU2 Antibody (1/100 dilution). Blue: DAPI for nuclear staining.

STAU2 Antibody is a Rabbit Polyclonal antibody against STAU2. Staufen homolog 2 is a member of the family of double-stranded RNA (dsRNA)-binding proteins involved in the transport and/or localization of mRNAs to different subcellular compartments and/or organelles. These proteins are characterized by the presence of multiple dsRNA-binding domains which are required to bind RNAs having double-stranded secondary structures. Staufen homolog 2 shares 48.5% and 59.9% similarity with drosophila and human staufen, respectively. The exact function of Staufen homolog 2 is not known, but since it contains 3 copies of conserved dsRNA binding domain, it could be involved in double-stranded RNA binding events. Several transcript variants encoding different isoforms have been found for this gene.

Target: Staufen Double-Stranded RNA Binding Protein 2 (STAU2)

Clonality: Polyclonal

Reactivity: Human, Mouse, Rat

Tested Applications: WB, IF/ICC

Host: Rabbit

Recommended dilutions: WB: 1/500 - 1/2000, IF/ICC: 1/50 - 1/200. Optimal dilutions/concentrations should be determined by the end user.

Conjugation: Unconjugated

Immunogen: A synthetic peptide corresponding to human STAU2

Datasheet

Version: 4.0.0
Revision date: 14 Sep 2025



Isotype:	IgG
Form:	Liquid
Purification:	Purified by affinity chromatography.
Storage:	Aliquot and store at -20°C. Avoid repeated freeze/thaw cycles.
UniProt Primary AC:	Q9NUL3 (UniProt , ExPASy)
Gene Symbol:	STAU2
GeneID:	27067
NCBI Accession:	NP_001157852.1
String:	9606.ENSP00000428756
Molecular Weight:	Calculated MW: 11 kDa/34 kDa/43 kDa/52 kDa/55 kDa/59 kDa/62 kDa Observed MW: 52 kDa
Buffer:	PBS, pH 7.3, containing 0.02% sodium azide, 50% glycerol.
Concentration:	1 mg/ml
Note:	THIS PRODUCT IS FOR RESEARCH USE ONLY. NOT FOR USE IN DIAGNOSTIC, THERAPEUTIC OR COSMETIC PROCEDURES. NOT FOR HUMAN OR ANIMAL CONSUMPTION.