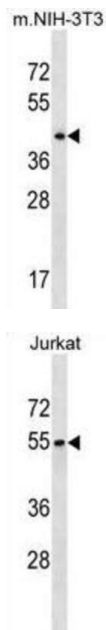


Septin 6 (SEPTIN6) Antibody

Catalogue No.: abx030486



This gene is a member of the septin family of GTPases. Members of this family are required for cytokinesis. One version of pediatric acute myeloid leukemia is the result of a reciprocal translocation between chromosomes 11 and X, with the breakpoint associated with the genes encoding the mixed-lineage leukemia and septin 2 proteins. This gene encodes four transcript variants encoding three distinct isoforms. An additional transcript variant has been identified, but its biological validity has not been determined.

Target: Septin 6 (SEPTIN6)

Clonality: Polyclonal

Reactivity: Human, Mouse

Tested Applications: ELISA, WB

Host: Rabbit

Recommended dilutions: WB: 1/1000. Optimal dilutions/concentrations should be determined by the end user.

Conjugation: Unconjugated

Immunogen: KLH-conjugated synthetic peptide between 400-426 amino acids from the C-terminal region of human SEPT6.

Isotype: IgG

Datasheet

Version: 3.0.0
Revision date: 29 Jul 2025



Form:	Liquid
Purification:	Purified through a protein A column, followed by peptide affinity purification.
Storage:	Aliquot and store at -20°C. Avoid repeated freeze/thaw cycles.
UniProt Primary AC:	Q14141 (UniProt , ExPASy)
KEGG:	hsa:23157
String:	9606.ENSP00000341524
Molecular Weight:	Calculated MW: 49.7 kDa
Buffer:	PBS containing 0.09% sodium azide.
Specificity:	Predicted to react with Cow SEPTIN6.
Note:	THIS PRODUCT IS FOR RESEARCH USE ONLY. NOT FOR USE IN DIAGNOSTIC, THERAPEUTIC OR COSMETIC PROCEDURES. NOT FOR HUMAN OR ANIMAL CONSUMPTION.

For Reference Only