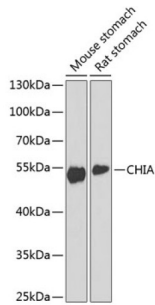
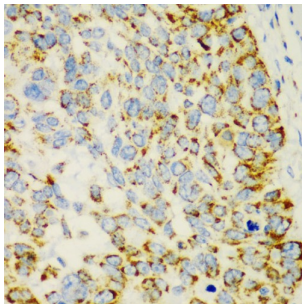


## Acidic Mammalian Chitinase (CHIA) Antibody

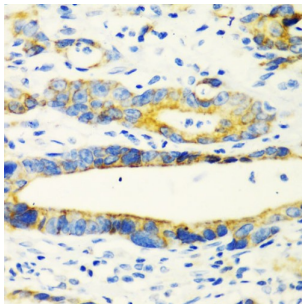
Catalogue No.: abx002450



Western blot analysis of extracts of various cell lines using CHIA Antibody (1/1000 dilution).



Immunohistochemistry of paraffin-embedded Human esophageal cancer using CHIA Antibody (1/100 dilution, 40x lens).



Immunohistochemistry of paraffin-embedded Human gastric cancer using CHIA Antibody (1/100 dilution, 40x lens).

CHIA Antibody is a Rabbit Polyclonal antibody against CHIA. The protein encoded by this gene degrades chitin, which is found in the cell wall of most fungi as well as in arthropods and some nematodes. The encoded protein can also stimulate interleukin 13 expression, and variations in this gene can lead to asthma susceptibility. Several transcript variants encoding a few different isoforms have been found for this gene.

**Target:** Acidic Mammalian Chitinase (CHIA)

**Clonality:** Polyclonal

**Reactivity:** Human, Mouse, Rat

**Tested Applications:** WB, IHC

**Host:** Rabbit

**Recommended dilutions:** WB: 1/500 - 1/2000, IHC-P: 1/50 - 1/200. Not tested in IHC-F. Optimal dilutions/concentrations should be determined by the end user.

# Datasheet

Version: 4.0.0  
Revision date: 13 Aug 2025



<b>Conjugation:</b>	Unconjugated
<b>Immunogen:</b>	Recombinant fusion protein corresponding to human CHIA
<b>Isotype:</b>	IgG
<b>Form:</b>	Liquid
<b>Purification:</b>	Purified by affinity chromatography.
<b>Storage:</b>	Aliquot and store at -20°C. Avoid repeated freeze/thaw cycles.
<b>UniProt Primary AC:</b>	Q9BZP6 ( <a href="#">UniProt</a> , <a href="#">ExPASy</a> )
<b>Gene Symbol:</b>	CHIA
<b>GeneID:</b>	<a href="#">27159</a>
<b>NCBI Accession:</b>	NP_001244932.1
<b>String:</b>	<a href="#">9606.ENSP00000358755</a>
<b>Molecular Weight:</b>	Calculated MW: 33 kDa/40 kDa/52 kDa Observed MW: 52 kDa
<b>Buffer:</b>	PBS, pH 7.3, containing 0.02% sodium azide, 50% glycerol.
<b>Concentration:</b>	1 mg/ml
<b>Note:</b>	THIS PRODUCT IS FOR RESEARCH USE ONLY. NOT FOR USE IN DIAGNOSTIC, THERAPEUTIC OR COSMETIC PROCEDURES. NOT FOR HUMAN OR ANIMAL CONSUMPTION.