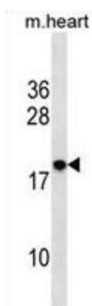


## RING Finger Protein 24 (RNF24) Antibody

Catalogue No.: abx030513



The protein encoded by this gene contains similarity to the Drosophila goliath protein and thus may function as a transcription factor. Multiple alternatively spliced transcript variants that encode different isoforms have been found for this gene.

**Target:** RING Finger Protein 24 (RNF24)

**Clonality:** Polyclonal

**Reactivity:** Mouse

**Tested Applications:** ELISA, WB

**Host:** Rabbit

**Recommended dilutions:** WB: 1/1000. Optimal dilutions/concentrations should be determined by the end user.

**Conjugation:** Unconjugated

**Immunogen:** KLH-conjugated synthetic peptide between 33-61 amino acids from the Central region of human RNF24.

**Isotype:** IgG

**Form:** Liquid

**Purification:** Purified through a protein A column, followed by peptide affinity purification.

**Storage:** Aliquot and store at -20°C. Avoid repeated freeze/thaw cycles.

**UniProt Primary AC:** Q9Y225 ([UniProt](#), [ExPASy](#))

**Gene Symbol:** RNF24

# Datasheet

Version: 2.0.0

Revision date: 23 Aug 2025



**String:** [9606.ENSF00000388550](#)

**Molecular Weight:** Calculated MW: 17.2 kDa

**Buffer:** PBS containing 0.09% sodium azide.

**Note:** THIS PRODUCT IS FOR RESEARCH USE ONLY. NOT FOR USE IN DIAGNOSTIC, THERAPEUTIC OR COSMETIC PROCEDURES. NOT FOR HUMAN OR ANIMAL CONSUMPTION.

For Reference Only