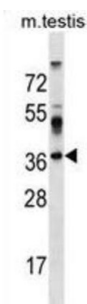


Surfeit 4 (SURF4) Antibody

Catalogue No.: abx030531



This gene is located in the surfeit gene cluster, which is comprised of very tightly linked housekeeping genes that do not share sequence similarity. The encoded protein is a conserved integral membrane protein containing multiple putative transmembrane regions. In eukaryotic cells, protein transport between the endoplasmic reticulum and Golgi compartments is mediated in part by non-clathrin-coated vesicular coat proteins (COPs). The specific function of this protein has not been determined but its yeast homolog is directly required for packaging glycosylated pro-alpha-factor into COPII vesicles. This gene uses multiple polyadenylation sites, resulting in transcript length variation. The existence of alternatively spliced transcript variants has been suggested, but their validity has not been determined.

Target: Surfeit 4 (SURF4)

Clonality: Polyclonal

Reactivity: Mouse

Tested Applications: ELISA, WB

Host: Rabbit

Recommended dilutions: WB: 1/1000. Optimal dilutions/concentrations should be determined by the end user.

Conjugation: Unconjugated

Immunogen: KLH-conjugated synthetic peptide between 211-237 amino acids from the C-terminal region of human SURF4.

Isotype: IgG

Form: Liquid

Purification: Purified through a protein A column, followed by peptide affinity purification.

Storage: Aliquot and store at -20°C. Avoid repeated freeze/thaw cycles.

Datasheet

Version: 4.0.0
Revision date: 06 Mar 2025



UniProt Primary AC: O15260 ([UniProt](#), [ExPASy](#))

Gene Symbol: SURF4

KEGG: hsa:6836

String: [9606.ENSP00000361057](#)

Molecular Weight: Calculated MW: 30.4 kDa

Buffer: PBS containing 0.09% sodium azide.

Specificity: Predicted to react with Cow SURF4.

Note: THIS PRODUCT IS FOR RESEARCH USE ONLY. NOT FOR USE IN DIAGNOSTIC, THERAPEUTIC OR COSMETIC PROCEDURES. NOT FOR HUMAN OR ANIMAL CONSUMPTION.

For Reference Only