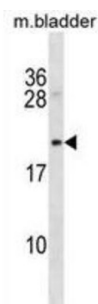


## Protein B-Myc (Mycb) Antibody

Catalogue No.: abx030537



Mycb seems to act as an inhibitor of cellular proliferation (By similarity).

**Target:** Protein B-Myc (Mycb)

**Clonality:** Polyclonal

**Reactivity:** Mouse

**Tested Applications:** ELISA, WB

**Host:** Rabbit

**Recommended dilutions:** WB: 1/1000. Optimal dilutions/concentrations should be determined by the end user.

**Conjugation:** Unconjugated

**Immunogen:** KLH-conjugated synthetic peptide between 120-146 amino acids from the C-terminal region of rat Mycb.

**Isotype:** IgG

**Form:** Liquid

**Purification:** Purified through a protein A column, followed by peptide affinity purification.

**Storage:** Aliquot and store at -20°C. Avoid repeated freeze/thaw cycles.

**UniProt Primary AC:** P15063 ([UniProt](#), [ExPASy](#))

**KEGG:** rno:311807

**String:** [10116.ENSARNOP00000059721](#)

# Datasheet

Version: 6.0.0

Revision date: 15 Aug 2025



**Molecular Weight:** Calculated MW: 18.3 kDa

**Buffer:** PBS containing 0.09% sodium azide.

**Note:** THIS PRODUCT IS FOR RESEARCH USE ONLY. NOT FOR USE IN DIAGNOSTIC, THERAPEUTIC OR COSMETIC PROCEDURES. NOT FOR HUMAN OR ANIMAL CONSUMPTION.

For Reference Only