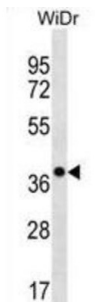


## Calcium-Activated Chloride Channel Regulator Family Member 3 (CLCA3P) Antibody

Catalogue No.: abx030552



mCLCA3 (alias gob-5) is the third murine member of the family of calcium-activated chloride channels (CLCA-family). mCLCA3 plays a role in diseases with secretory dysfunctions, including asthma and cystic fibrosis. The mCLCA3 protein is located in mucin granule membranes of goblet cells of the intestinal, respiratory and reproductive tracts. It is also secreted into the mucin layer on mucosal membranes. The protein appears to be involved in the synthesis, condensation or secretion of mucins.

<b>Target:</b>	Calcium-Activated Chloride Channel Regulator Family Member 3 (CLCA3P)
<b>Clonality:</b>	Polyclonal
<b>Reactivity:</b>	Human
<b>Tested Applications:</b>	ELISA, WB
<b>Host:</b>	Rabbit
<b>Recommended dilutions:</b>	WB: 1/1000. Optimal dilutions/concentrations should be determined by the end user.
<b>Conjugation:</b>	Unconjugated
<b>Immunogen:</b>	KLH-conjugated synthetic peptide between 70-98 amino acids from the Central region of human CLCA3P.
<b>Isotype:</b>	IgG
<b>Form:</b>	Liquid
<b>Purification:</b>	Purified through a protein A column, followed by peptide affinity purification.
<b>Storage:</b>	Aliquot and store at -20°C. Avoid repeated freeze/thaw cycles.
<b>UniProt Primary AC:</b>	Q9Y6N3 ( <a href="#">UniProt</a> , <a href="#">ExPASy</a> )

# Datasheet

Version: 4.0.0

Revision date: 22 Jun 2025



**Gene Symbol:** CLCA3P

**Molecular Weight:** Calculated MW: 30 kDa

**Buffer:** PBS containing 0.09% sodium azide.

**Note:** THIS PRODUCT IS FOR RESEARCH USE ONLY. NOT FOR USE IN DIAGNOSTIC, THERAPEUTIC OR COSMETIC PROCEDURES. NOT FOR HUMAN OR ANIMAL CONSUMPTION.

For Reference Only