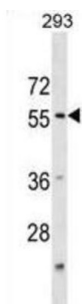


Katanin P60 Subunit A 1 (KATNA1) Antibody

Catalogue No.: abx030559



Microtubules, polymers of alpha and beta tubulin subunits, form the mitotic spindle of a dividing cell and help to organize membranous organelles during interphase. Katanin is a heterodimer that consists of a 60 kDa ATPase (p60 subunit A 1) and an 80 kDa accessory protein (p80 subunit B 1). The p60 subunit acts to sever and disassemble microtubules, while the p80 subunit targets the enzyme to the centrosome. This gene encodes the p80 subunit. This protein is a member of the AAA family of ATPases. [provided by RefSeq].

Target:	Katanin P60 Subunit A 1 (KATNA1)
Clonality:	Polyclonal
Reactivity:	Human
Tested Applications:	ELISA, WB
Host:	Rabbit
Recommended dilutions:	WB: 1/1000. Optimal dilutions/concentrations should be determined by the end user.
Conjugation:	Unconjugated
Immunogen:	KLH-conjugated synthetic peptide between 59-85 amino acids from the N-terminal region of human KATNA1.
Isotype:	IgG
Form:	Liquid
Purification:	Purified through a protein A column, followed by peptide affinity purification.
Storage:	Aliquot and store at -20°C. Avoid repeated freeze/thaw cycles.
UniProt Primary AC:	O75449 (UniProt , ExPASy)

Datasheet

Version: 3.0.0
Revision date: 23 Jun 2025



Gene Symbol: KATNA1

KEGG: hsa:11104

String: [9606.ENSP00000356381](#)

Molecular Weight: Calculated MW: 56 kDa

Buffer: PBS containing 0.09% sodium azide.

Specificity: Predicted to react with Monkey KATNA1.

Note: THIS PRODUCT IS FOR RESEARCH USE ONLY. NOT FOR USE IN DIAGNOSTIC, THERAPEUTIC OR COSMETIC PROCEDURES. NOT FOR HUMAN OR ANIMAL CONSUMPTION.

For Reference Only