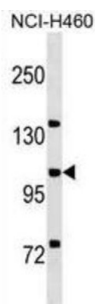


## Guanine Nucleotide Exchange Factor DBS (MCF2L) Antibody

Catalogue No.: abx030565



Guanine nucleotide exchange factor that potentially links pathways that signal through RAC1, RHOA and CDC42. Catalyzes guanine nucleotide exchange on RHOA and CDC42 and interacts specifically with the GTP-bound form of RAC1, suggesting that it functions as an effector of RAC1. May also participate in axonal transport in the brain. Becomes activated and highly tumorigenic by truncation of the N-terminus (By similarity). Isoform 5 activates CDC42.

<b>Target:</b>	Guanine Nucleotide Exchange Factor DBS (MCF2L)
<b>Clonality:</b>	Polyclonal
<b>Reactivity:</b>	Human
<b>Tested Applications:</b>	ELISA, WB
<b>Host:</b>	Rabbit
<b>Recommended dilutions:</b>	WB: 1/1000. Optimal dilutions/concentrations should be determined by the end user.
<b>Conjugation:</b>	Unconjugated
<b>Immunogen:</b>	KLH-conjugated synthetic peptide between 1049-1075 amino acids from the C-terminal region of human MCF2L.
<b>Isotype:</b>	IgG
<b>Form:</b>	Liquid
<b>Purification:</b>	Purified through a protein A column, followed by peptide affinity purification.
<b>Storage:</b>	Aliquot and store at -20°C. Avoid repeated freeze/thaw cycles.
<b>UniProt Primary AC:</b>	O15068 ( <a href="#">UniProt</a> , <a href="#">ExPASy</a> )
<b>Gene Symbol:</b>	MCF2L

# Datasheet

Version: 3.0.0

Revision date: 08 Oct 2025



**KEGG:** hsa:23263

**String:** [9606.ENSP00000440374](#)

**Molecular Weight:** Calculated MW: 128 kDa

**Buffer:** PBS containing 0.09% sodium azide.

**Note:** THIS PRODUCT IS FOR RESEARCH USE ONLY. NOT FOR USE IN DIAGNOSTIC, THERAPEUTIC OR COSMETIC PROCEDURES. NOT FOR HUMAN OR ANIMAL CONSUMPTION.

For Reference Only