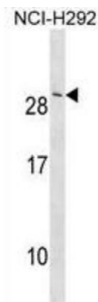


## CASP2 And RIPK1 Domain Containing Adaptor With Death Domain (CRADD) Antibody

Catalogue No.: abx030570



The protein encoded by this gene is a death domain (CARD/DD) containing protein and has been shown to induce cell apoptosis. Through its CARD domain, this protein interacts with, and thus recruits, caspase 2/ICH1 to the cell death signal transduction complex that includes tumor necrosis factor receptor 1 (TNFR1A), RIPK1/RIP kinase, and numbers of other CARD domain-containing proteins.

<b>Target:</b>	CASP2 And RIPK1 Domain Containing Adaptor With Death Domain (CRADD)
<b>Clonality:</b>	Polyclonal
<b>Reactivity:</b>	Human
<b>Tested Applications:</b>	ELISA, WB
<b>Host:</b>	Rabbit
<b>Recommended dilutions:</b>	WB: 1/1000. Optimal dilutions/concentrations should be determined by the end user.
<b>Conjugation:</b>	Unconjugated
<b>Immunogen:</b>	KLH-conjugated synthetic peptide between 69-98 amino acids from the Central region of human CRADD.
<b>Isotype:</b>	IgG
<b>Form:</b>	Liquid
<b>Purification:</b>	Purified through a protein A column, followed by peptide affinity purification.
<b>Storage:</b>	Aliquot and store at -20°C. Avoid repeated freeze/thaw cycles.
<b>UniProt Primary AC:</b>	P78560 ( <a href="#">UniProt</a> , <a href="#">ExPASy</a> )

# Datasheet

Version: 4.0.0

Revision date: 25 Jun 2025



**KEGG:** hsa:8738

**String:** [9606.ENSP00000439068](#)

**Molecular Weight:** Calculated MW: 22.7 kDa

**Buffer:** PBS containing 0.09% sodium azide.

**Note:** THIS PRODUCT IS FOR RESEARCH USE ONLY. NOT FOR USE IN DIAGNOSTIC, THERAPEUTIC OR COSMETIC PROCEDURES. NOT FOR HUMAN OR ANIMAL CONSUMPTION.

For Reference Only