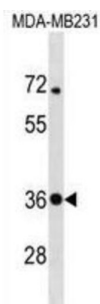


Syntaxin-4 (STX4) Antibody

Catalogue No.: abx030581



Plasma membrane t-SNARE that mediates docking of transport vesicles. Necessary for the translocation of SLC2A4 from intracellular vesicles to the plasma membrane. Together with STXB3 and VAMP2, may also play a role in docking/fusion of intracellular GLUT4-containing vesicles with the cell surface in adipocytes (By similarity). May also play a role in docking of synaptic vesicles at presynaptic active zones.

Target:	Syntaxin-4 (STX4)
Clonality:	Polyclonal
Reactivity:	Human
Tested Applications:	ELISA, WB
Host:	Rabbit
Recommended dilutions:	WB: 1/1000. Optimal dilutions/concentrations should be determined by the end user.
Conjugation:	Unconjugated
Immunogen:	KLH-conjugated synthetic peptide between 132-160 amino acids from the Central region of human STX4.
Isotype:	IgG
Form:	Liquid
Purification:	Purified through a protein A column, followed by peptide affinity purification.
Storage:	Aliquot and store at -20°C. Avoid repeated freeze/thaw cycles.
UniProt Primary AC:	Q12846 (UniProt , ExPASy)
KEGG:	hsa:6810

Datasheet

Version: 3.0.0

Revision date: 13 Sep 2025



String: [9606.ENSPO0000317714](#)

Molecular Weight: Calculated MW: 34.2 kDa

Buffer: PBS containing 0.09% sodium azide.

Specificity: Predicted to react with Mouse, Rat and Cow STX4.

Note: THIS PRODUCT IS FOR RESEARCH USE ONLY. NOT FOR USE IN DIAGNOSTIC, THERAPEUTIC OR COSMETIC PROCEDURES. NOT FOR HUMAN OR ANIMAL CONSUMPTION.

For Reference Only