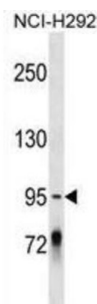


Protocadherin Gamma-C4 (PCDHGC4) Antibody

Catalogue No.: abx030603



This gene is a member of the protocadherin gamma gene cluster, one of three related clusters tandemly linked on chromosome five. These gene clusters have an immunoglobulin-like organization, suggesting that a novel mechanism may be involved in their regulation and expression. The gamma gene cluster includes 22 genes divided into 3 subfamilies. Subfamily A contains 12 genes, subfamily B contains 7 genes and 2 pseudogenes, and the more distantly related subfamily C contains 3 genes. The tandem array of 22 large, variable region exons are followed by a constant region, containing 3 exons shared by all genes in the cluster. Each variable region exon encodes the extracellular region, which includes 6 cadherin ectodomains and a transmembrane region. The constant region exons encode the common cytoplasmic region. These neural cadherin-like cell adhesion proteins most likely play a critical role in the establishment and function of specific cell-cell connections in the brain. Alternative splicing has been described for the gamma cluster genes.

| | |
|-------------------------------|---|
| Target: | Protocadherin Gamma-C4 (PCDHGC4) |
| Clonality: | Polyclonal |
| Reactivity: | Human |
| Tested Applications: | ELISA, WB |
| Host: | Rabbit |
| Recommended dilutions: | WB: 1/1000. Optimal dilutions/concentrations should be determined by the end user. |
| Conjugation: | Unconjugated |
| Immunogen: | KLH-conjugated synthetic peptide between 265-291 amino acids from the N-terminal region of human PCDHGC4. |
| Isotype: | IgG |
| Form: | Liquid |
| Purification: | Purified through a protein A column, followed by peptide affinity purification. |
| Storage: | Aliquot and store at -20°C. Avoid repeated freeze/thaw cycles. |

Datasheet

Version: 3.0.0

Revision date: 17 Jul 2025



UniProt Primary AC: Q9Y5F7 ([UniProt](#), [ExPASy](#))

Gene Symbol: PCDHGC4

String: [9606.ENSP00000306918](#)

Molecular Weight: Calculated MW: 101 kDa

Buffer: PBS containing 0.09% sodium azide.

Note: THIS PRODUCT IS FOR RESEARCH USE ONLY. NOT FOR USE IN DIAGNOSTIC, THERAPEUTIC OR COSMETIC PROCEDURES. NOT FOR HUMAN OR ANIMAL CONSUMPTION.

For Reference Only