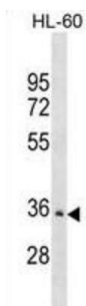


Actin-Associated LIM Protein / ALP (PDLIM3) Antibody

Catalogue No.: abx030605



The protein encoded by this gene contains a PDZ domain and a LIM domain, indicating that it may be involved in cytoskeletal assembly. In support of this, the encoded protein has been shown to bind the spectrin-like repeats of alpha-actinin-2 and to colocalize with alpha-actinin-2 at the Z lines of skeletal muscle. This gene is found near a region of chromosome 4 that has been implicated in facioscapulohumeral muscular dystrophy, but this gene does not appear to be involved in the disease. Two transcript variants encoding different isoforms have been found for this gene.

Target: Actin-Associated LIM Protein / ALP (PDLIM3)

Clonality: Polyclonal

Reactivity: Human

Tested Applications: ELISA, WB

Host: Rabbit

Recommended dilutions: WB: 1/1000. Optimal dilutions/concentrations should be determined by the end user.

Conjugation: Unconjugated

Immunogen: KLH-conjugated synthetic peptide between 329-355 amino acids from the C-terminal region of human PDLIM3.

Isotype: IgG

Form: Liquid

Purification: Purified through a protein A column, followed by peptide affinity purification.

Storage: Aliquot and store at -20°C. Avoid repeated freeze/thaw cycles.

UniProt Primary AC: Q53GG5 ([UniProt](#), [ExPASy](#))

Datasheet

Version: 3.0.0

Revision date: 24 Jun 2025



KEGG: hsa:27295

String: [9606.ENSP00000284770](#)

Molecular Weight: Calculated MW: 39.2 kDa

Buffer: PBS containing 0.09% sodium azide.

Note: THIS PRODUCT IS FOR RESEARCH USE ONLY. NOT FOR USE IN DIAGNOSTIC, THERAPEUTIC OR COSMETIC PROCEDURES. NOT FOR HUMAN OR ANIMAL CONSUMPTION.

For Reference Only