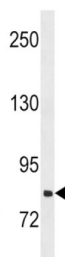


Solute Carrier Organic Anion Transporter Family Member 1B3 (SLCO1B3) Antibody

Catalogue No.: abx030673



SLCO1B3 belongs to the organic anion transporter (OATP) family. OATPs are involved in the membrane transport of bile acids, conjugated steroids, thyroid hormone, eicosanoids, peptides, and numerous drugs in many tissues (Mikkaichi et al., 2004 [PubMed 14993604]).

Target:	Solute Carrier Organic Anion Transporter Family Member 1B3 (SLCO1B3)
Clonality:	Polyclonal
Reactivity:	Human
Tested Applications:	ELISA, WB
Host:	Rabbit
Recommended dilutions:	WB: 1/2000. Optimal dilutions/concentrations should be determined by the end user.
Conjugation:	Unconjugated
Immunogen:	KLH-conjugated synthetic peptide between 639-668 amino acids from the C-terminal region of human SLCO1B3.
Isotype:	IgG
Form:	Liquid
Purification:	Purified through a protein A column, followed by peptide affinity purification.
Storage:	Aliquot and store at -20°C. Avoid repeated freeze/thaw cycles.
UniProt Primary AC:	Q9NPD5 (UniProt , ExPASy)

Datasheet

Version: 4.0.0

Revision date: 19 Sep 2025



Gene Symbol: SLCO1B3

NCBI Accession: NP_062818.1

String: [9606.ENSP00000261196](#)

Molecular Weight: Calculated MW: 77.4 kDa

Buffer: PBS containing 0.09% sodium azide.

Note: THIS PRODUCT IS FOR RESEARCH USE ONLY. NOT FOR USE IN DIAGNOSTIC, THERAPEUTIC OR COSMETIC PROCEDURES. NOT FOR HUMAN OR ANIMAL CONSUMPTION.

For Reference Only