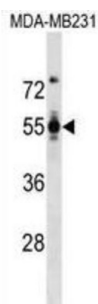


Podocalyxin (PODXL) Antibody

Catalogue No.: abx030705



This gene encodes a member of the sialomucin protein family. The encoded protein was originally identified as an important component of glomerular podocytes. Podocytes are highly differentiated epithelial cells with interdigitating foot processes covering the outer aspect of the glomerular basement membrane. Other biological activities of the encoded protein include: binding in a membrane protein complex with Na⁺/H⁺ exchanger regulatory factor to intracellular cytoskeletal elements, playing a role in hematopoietic cell differentiation, and being expressed in vascular endothelium cells and binding to L-selectin.

Target: Podocalyxin (PODXL)

Clonality: Polyclonal

Reactivity: Human

Tested Applications: ELISA, WB

Host: Rabbit

Recommended dilutions: WB: 1/1000. Optimal dilutions/concentrations should be determined by the end user.

Conjugation: Unconjugated

Immunogen: KLH-conjugated synthetic peptide between 410-439 amino acids from the C-terminal region of human PODXL.

Isotype: IgG

Form: Liquid

Purification: Purified through a protein A column, followed by peptide affinity purification.

Storage: Aliquot and store at -20°C. Avoid repeated freeze/thaw cycles.

UniProt Primary AC: O00592 ([UniProt](#), [ExPASy](#))

Datasheet

Version: 3.0.0

Revision date: 20 Aug 2025



Gene Symbol: PODXL

KEGG: hsa:5420

String: [9606.ENSEP00000367817](https://string-db.org/cgi/show.do?query=PODXL&species=human&score=0.9606&scoreType=ENSEMBL&scoreType=ENSEMBL)

Molecular Weight: Calculated MW: 58.6 kDa

Buffer: PBS containing 0.09% sodium azide.

Note: THIS PRODUCT IS FOR RESEARCH USE ONLY. NOT FOR USE IN DIAGNOSTIC, THERAPEUTIC OR COSMETIC PROCEDURES. NOT FOR HUMAN OR ANIMAL CONSUMPTION.

For Reference Only