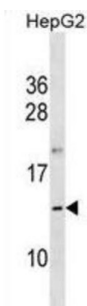


Putative Oocyte-Secreted Protein 1 Homolog (OOSP1) Antibody

Catalogue No.: abx030720



OOSP1 may be involved in cell differentiation (By similarity).

Target:	Putative Oocyte-Secreted Protein 1 Homolog (OOSP1)
Clonality:	Polyclonal
Reactivity:	Human
Tested Applications:	ELISA, WB
Host:	Rabbit
Recommended dilutions:	WB: 1/1000. Optimal dilutions/concentrations should be determined by the end user.
Conjugation:	Unconjugated
Immunogen:	KLH-conjugated synthetic peptide between 82-108 amino acids from the C-terminal region of human OOSP1.
Isotype:	IgG
Form:	Liquid
Purification:	Purified through a protein A column, followed by peptide affinity purification.
Storage:	Aliquot and store at -20°C. Avoid repeated freeze/thaw cycles.
UniProt Primary AC:	A8MZH6 (UniProt , ExPASy)
Gene Symbol:	OOSP1
Molecular Weight:	Calculated MW: 14.4 kDa

Datasheet

Version: 3.0.0

Revision date: 29 Sep 2025



Buffer: PBS containing 0.09% sodium azide.

Note: THIS PRODUCT IS FOR RESEARCH USE ONLY. NOT FOR USE IN DIAGNOSTIC, THERAPEUTIC OR COSMETIC PROCEDURES. NOT FOR HUMAN OR ANIMAL CONSUMPTION.

For Reference Only