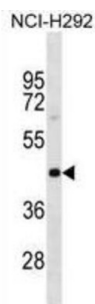


Polyadenylate-Binding Protein-Interacting Protein 1 (PAIP1) Antibody

Catalogue No.: abx030721



The protein encoded by this gene interacts with poly (A) binding protein and with the cap-binding complex eIF4A. It is involved in translational initiation and protein biosynthesis. Overexpression of this gene in COS7 cells stimulates translation. Alternative splicing occurs at this locus and three transcript variants encoding three distinct isoforms have been identified.

| | |
|-------------------------------|---|
| Target: | Polyadenylate-Binding Protein-Interacting Protein 1 (PAIP1) |
| Clonality: | Polyclonal |
| Reactivity: | Human |
| Tested Applications: | ELISA, WB |
| Host: | Rabbit |
| Recommended dilutions: | WB: 1/1000. Optimal dilutions/concentrations should be determined by the end user. |
| Conjugation: | Unconjugated |
| Immunogen: | KLH-conjugated synthetic peptide between 23-49 amino acids from the N-terminal region of human PAIP1. |
| Isotype: | IgG |
| Form: | Liquid |
| Purification: | Purified through a protein A column, followed by peptide affinity purification. |
| Storage: | Aliquot and store at -20°C. Avoid repeated freeze/thaw cycles. |
| UniProt Primary AC: | Q9H074 (UniProt , ExPASy) |
| Gene Symbol: | PAIP1 |

Datasheet

Version: 2.0.0

Revision date: 10 Oct 2025



String: [9606.ENSF00000302768](#)

Molecular Weight: Calculated MW: 53.5 kDa

Buffer: PBS containing 0.09% sodium azide.

Note: THIS PRODUCT IS FOR RESEARCH USE ONLY. NOT FOR USE IN DIAGNOSTIC, THERAPEUTIC OR COSMETIC PROCEDURES. NOT FOR HUMAN OR ANIMAL CONSUMPTION.

For Reference Only