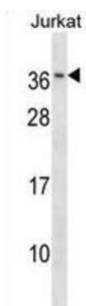


RAB8B, Member RAS Oncogene Family (RAB8B) Antibody

Catalogue No.: abx030728



RAB proteins, like RAB8B, are low molecular mass monomeric GTPases that localize on the cytoplasmic surfaces of distinct membrane-bound organelles. RAB proteins function in intracellular vesicle transport by aiding in the docking and/or fusion of vesicles with their target membranes (summary by Chen et al., 1997 [PubMed 9030196]).

Target:	RAB8B, Member RAS Oncogene Family (RAB8B)
Clonality:	Polyclonal
Reactivity:	Human
Tested Applications:	ELISA, WB
Host:	Rabbit
Recommended dilutions:	WB: 1/1000. Optimal dilutions/concentrations should be determined by the end user.
Conjugation:	Unconjugated
Immunogen:	KLH-conjugated synthetic peptide between 172-198 amino acids from the C-terminal region of human RAB8B.
Isotype:	IgG
Form:	Liquid
Purification:	Purified through a protein A column, followed by peptide affinity purification.
Storage:	Aliquot and store at -20°C. Avoid repeated freeze/thaw cycles.
UniProt Primary AC:	Q92930 (UniProt , ExPASy)
KEGG:	hsa:51762

Datasheet

Version: 2.0.0

Revision date: 25 Aug 2025



String: [9606.ENSPO0000312734](#)

Molecular Weight: Calculated MW: 23.6 kDa

Buffer: PBS containing 0.09% sodium azide.

Specificity: Predicted to react with Cow RAB8B.

Note: THIS PRODUCT IS FOR RESEARCH USE ONLY. NOT FOR USE IN DIAGNOSTIC, THERAPEUTIC OR COSMETIC PROCEDURES. NOT FOR HUMAN OR ANIMAL CONSUMPTION.

For Reference Only