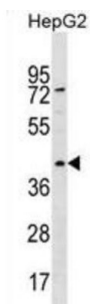


RBMXL1 Antibody

Catalogue No.: abx030730



This gene represents a retrogene of RNA binding motif protein, X-linked (RBMX), which is located on chromosome X. While all introns in the coding sequence have been processed out compared to the RBMX locus, the ORF is intact and there is specific evidence for transcription at this location. The preservation of the ORF by purifying selection in all Old World monkeys carrying it suggests that this locus is likely to be functional, possibly during male meiosis when X chromosomal genes are silenced or during haploid stages of spermatogenesis. This gene shares 5' exon structure with the cysteine conjugate-beta lyase 2 locus on chromosome 1, but the coding sequences are non-overlapping. Alternative splicing results in two transcript variants.

Target:	RBMXL1
Clonality:	Polyclonal
Reactivity:	Human
Tested Applications:	ELISA, WB
Host:	Rabbit
Recommended dilutions:	WB: 1/1000. Optimal dilutions/concentrations should be determined by the end user.
Conjugation:	Unconjugated
Immunogen:	KLH-conjugated synthetic peptide between 237-263 amino acids from the Central region of human RBMXL1.
Isotype:	IgG
Form:	Liquid
Purification:	Purified through a protein A column, followed by peptide affinity purification.
Storage:	Aliquot and store at -20°C. Avoid repeated freeze/thaw cycles.
UniProt Primary AC:	Q96E39 (UniProt , ExPASy)

Datasheet

Version: 2.0.0

Revision date: 20 Aug 2025



KEGG: hsa:494115

String: [9606.ENSP00000446099](#)

Molecular Weight: Calculated MW: 42.1 kDa

Buffer: PBS containing 0.09% sodium azide.

Specificity: Predicted to react with Mouse and Rat RBMXL1.

Note: THIS PRODUCT IS FOR RESEARCH USE ONLY. NOT FOR USE IN DIAGNOSTIC, THERAPEUTIC OR COSMETIC PROCEDURES. NOT FOR HUMAN OR ANIMAL CONSUMPTION.

For Reference Only