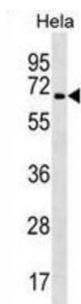


## TRAF3 Interacting Protein 2 (TRAF3IP2) Antibody

Catalogue No.: abx030734



This gene encodes a protein involved in regulating responses to cytokines by members of the Rel/NF-kappaB transcription factor family. These factors play a central role in innate immunity in response to pathogens, inflammatory signals and stress. This gene product interacts with TRAF proteins (tumor necrosis factor receptor-associated factors) and either I-kappaB kinase or MAP kinase to activate either NF-kappaB or Jun kinase. Several alternative transcripts encoding different isoforms have been identified. Another transcript, which does not encode a protein and is transcribed in the opposite orientation, has been identified. Overexpression of this transcript has been shown to reduce expression of at least one of the protein encoding transcripts, suggesting it has a regulatory role in the expression of this gene.

**Target:** TRAF3 Interacting Protein 2 (TRAF3IP2)

**Clonality:** Polyclonal

**Reactivity:** Human

**Tested Applications:** ELISA, WB

**Host:** Rabbit

**Recommended dilutions:** WB: 1/1000. Optimal dilutions/concentrations should be determined by the end user.

**Conjugation:** Unconjugated

**Immunogen:** KLH-conjugated synthetic peptide between 463-492 amino acids from the C-terminal region of human TRAF3IP2.

**Isotype:** IgG

**Form:** Liquid

**Purification:** Purified through a protein A column, followed by peptide affinity purification.

**Storage:** Aliquot and store at -20°C. Avoid repeated freeze/thaw cycles.

# Datasheet

Version: 2.0.0

Revision date: 22 Aug 2025



**UniProt Primary AC:** O43734 ([UniProt](#), [ExPASy](#))

**Gene Symbol:** TRAF3IP2

**KEGG:** hsa:10758

**String:** [9606.ENSP00000357750](#)

**Molecular Weight:** Calculated MW: 64.7 kDa

**Buffer:** PBS containing 0.09% sodium azide.

**Note:** THIS PRODUCT IS FOR RESEARCH USE ONLY. NOT FOR USE IN DIAGNOSTIC, THERAPEUTIC OR COSMETIC PROCEDURES. NOT FOR HUMAN OR ANIMAL CONSUMPTION.

For Reference Only