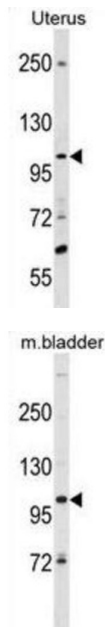


Signal Peptide, CUB And EGF-Like Domain-Containing Protein 3 (SCUBE3) Antibody

Catalogue No.: abx030742



SCUBE3 contains one CUB domain and 9 EGF-like domains. It is highly expressed in primary osteoblasts and the long bones (humerus and femur) and expression is low or absent in non-bone tissues. It may play an important role in bone cell biology.

Target: Signal Peptide, CUB And EGF-Like Domain-Containing Protein 3 (SCUBE3)

Clonality: Polyclonal

Reactivity: Human, Mouse

Tested Applications: ELISA, WB

Host: Rabbit

Recommended dilutions: WB: 1/1000. Optimal dilutions/concentrations should be determined by the end user.

Conjugation: Unconjugated

Immunogen: KLH-conjugated synthetic peptide between 480-509 amino acids from the Central region of human SCUBE3.

Isotype: IgG

Form: Liquid

Datasheet

Version: 3.0.0
Revision date: 15 Aug 2025



Purification:	Purified through a protein A column, followed by peptide affinity purification.
Storage:	Aliquot and store at -20°C. Avoid repeated freeze/thaw cycles.
UniProt Primary AC:	Q8IX30 (UniProt , ExPASy)
Gene Symbol:	SCUBE3
KEGG:	hsa:222663
String:	9606.ENSP00000274938
Molecular Weight:	Calculated MW: 109 kDa
Buffer:	PBS containing 0.09% sodium azide.
Note:	THIS PRODUCT IS FOR RESEARCH USE ONLY. NOT FOR USE IN DIAGNOSTIC, THERAPEUTIC OR COSMETIC PROCEDURES. NOT FOR HUMAN OR ANIMAL CONSUMPTION.

For Reference Only