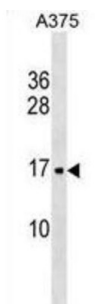


Signal Recognition Particle 14 (SRP14) Antibody

Catalogue No.: abx030758



Signal-recognition-particle assembly has a crucial role in targeting secretory proteins to the rough endoplasmic reticulum membrane. SRP9 together with SRP14 and the Alu portion of the SRP RNA, constitutes the elongation arrest domain of SRP. The complex of SRP9 and SRP14 is required for SRP RNA binding.

Target:	Signal Recognition Particle 14 (SRP14)
Clonality:	Polyclonal
Reactivity:	Human
Tested Applications:	ELISA, WB
Host:	Rabbit
Recommended dilutions:	WB: 1/2000. Optimal dilutions/concentrations should be determined by the end user.
Conjugation:	Unconjugated
Immunogen:	KLH-conjugated synthetic peptide between 28-55 amino acids from the Central region of human SRP14.
Isotype:	IgG
Form:	Liquid
Purification:	Purified through a protein A column, followed by peptide affinity purification.
Storage:	Aliquot and store at -20°C. Avoid repeated freeze/thaw cycles.
UniProt Primary AC:	P37108 (UniProt , ExPASy)
Gene Symbol:	SRP14

Datasheet

Version: 3.0.0

Revision date: 13 Aug 2025



KEGG: hsa:6727

String: [9606.ENSF00000267884](#)

Molecular Weight: Calculated MW: 14.6 kDa

Buffer: PBS containing 0.09% sodium azide.

Specificity: Predicted to react with Monkey SRP14.

Note: THIS PRODUCT IS FOR RESEARCH USE ONLY. NOT FOR USE IN DIAGNOSTIC, THERAPEUTIC OR COSMETIC PROCEDURES. NOT FOR HUMAN OR ANIMAL CONSUMPTION.

For Reference Only