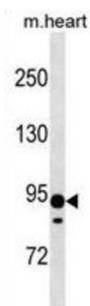


Xylosyltransferase 2 (XYLT2) Antibody

Catalogue No.: abx030810



The protein encoded by this gene is an isoform of xylosyltransferase, which belongs to a family of glycosyltransferases. This enzyme transfers xylose from UDP-xylose to specific serine residues of the core protein and initiates the biosynthesis of glycosaminoglycan chains in proteoglycans including chondroitin sulfate, heparan sulfate, heparin and dermatan sulfate. The enzyme activity, which is increased in scleroderma patients, is a diagnostic marker for the determination of sclerotic activity in systemic sclerosis.

Target:	Xylosyltransferase 2 (XYLT2)
Clonality:	Polyclonal
Reactivity:	Mouse
Tested Applications:	ELISA, WB
Host:	Rabbit
Recommended dilutions:	WB: 1/1000. Optimal dilutions/concentrations should be determined by the end user.
Conjugation:	Unconjugated
Immunogen:	KLH-conjugated synthetic peptide between 29-58 amino acids from the N-terminal region of human XYLT2.
Isotype:	IgG
Form:	Liquid
Purification:	Purified through a protein A column, followed by peptide affinity purification.
Storage:	Aliquot and store at -20°C. Avoid repeated freeze/thaw cycles.
UniProt Primary AC:	Q9H1B5 (UniProt , ExPASy)

Datasheet

Version: 2.0.0

Revision date: 22 Dec 2025



Gene Symbol: XYLT2

String: [9606.ENSP00000017003](#)

Molecular Weight: Calculated MW: 96.8 kDa

Buffer: PBS containing 0.09% sodium azide.

Specificity: Predicted to react with Rat XYLT2.

Note: THIS PRODUCT IS FOR RESEARCH USE ONLY. NOT FOR USE IN DIAGNOSTIC, THERAPEUTIC OR COSMETIC PROCEDURES. NOT FOR HUMAN OR ANIMAL CONSUMPTION.

For Reference Only