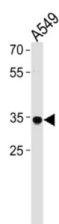
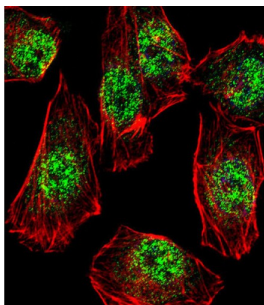


Rhox Homeobox Family Member 2B (RHOXF2B) Antibody

Catalogue No.: abx030827



The function of this protein remains unknown.

Target: Rhox Homeobox Family Member 2B (RHOXF2B)

Clonality: Polyclonal

Reactivity: Human

Tested Applications: ELISA, WB, IF/ICC

Host: Rabbit

Recommended dilutions: WB: 1/1000, IF/ICC: 1/10 - 1/50. Optimal dilutions/concentrations should be determined by the end user.

Conjugation: Unconjugated

Immunogen: KLH-conjugated synthetic peptide between 95-121 amino acids from the Central region of human RHOXF2B.

Isotype: IgG

Form: Liquid

Purification: Purified through a protein A column, followed by peptide affinity purification.

Datasheet

Version: 2.0.0

Revision date: 02 May 2025



Storage: Aliquot and store at -20°C. Avoid repeated freeze/thaw cycles.

UniProt Primary AC: P0C7M4 ([UniProt](#), [ExPASy](#))

NCBI Accession: NP_001093155.1

KEGG: hsa:727940

String: [9606.ENSP00000360455](#)

Molecular Weight: Calculated MW: 31.6 kDa

Buffer: PBS containing 0.09% sodium azide.

Note: THIS PRODUCT IS FOR RESEARCH USE ONLY. NOT FOR USE IN DIAGNOSTIC, THERAPEUTIC OR COSMETIC PROCEDURES. NOT FOR HUMAN OR ANIMAL CONSUMPTION.

For Reference Only