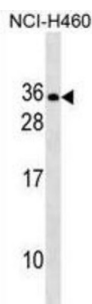


## Prorelaxin H2 (RLN2) Antibody

Catalogue No.: abx030828



Relaxins are known endocrine and autocrine/paracrine hormones, belonging to the insulin gene superfamily. In the human there are three non-allelic relaxin genes, RLN1, RLN2 and RLN3. RLN1 and RLN2 share high sequence homology. The active form of the encoded protein consists of an A chain and a B chain but their cleavage sites are not definitely described yet. Relaxin is produced by the ovary, and targets the mammalian reproductive system to ripen the cervix, elongate the pubic symphysis and inhibit uterine contraction. It may have additional roles in enhancing sperm motility, regulating blood pressure, controlling heart rate and releasing oxytocin and vasopressin. There are two alternatively spliced transcript variants encoding different isoforms described for this gene.

**Target:** Prorelaxin H2 (RLN2)

**Clonality:** Polyclonal

**Reactivity:** Human

**Tested Applications:** ELISA, WB

**Host:** Rabbit

**Recommended dilutions:** WB: 1/1000. Optimal dilutions/concentrations should be determined by the end user.

**Conjugation:** Unconjugated

**Immunogen:** KLH-conjugated synthetic peptide between 139-165 amino acids from the C-terminal region of human RLN2.

**Isotype:** IgG

**Form:** Liquid

**Purification:** Purified through a protein A column, followed by peptide affinity purification.

**Storage:** Aliquot and store at -20°C. Avoid repeated freeze/thaw cycles.

# Datasheet

Version: 4.0.0

Revision date: 18 Aug 2025



**UniProt Primary AC:** P04090 ([UniProt](#), [ExPASy](#))

**Gene Symbol:** RLN2

**GeneID:** [6019](#)

**OMIM:** [179740](#)

**HGNC:** 10027

**KEGG:** hsa:6019

**Ensembl:** ENSG00000107014

**String:** [9606.ENSP00000371040](#)

**Molecular Weight:** Calculated MW: 21 kDa

**Buffer:** PBS containing 0.09% sodium azide.

**Note:** THIS PRODUCT IS FOR RESEARCH USE ONLY. NOT FOR USE IN DIAGNOSTIC, THERAPEUTIC OR COSMETIC PROCEDURES. NOT FOR HUMAN OR ANIMAL CONSUMPTION.

For Reference Only