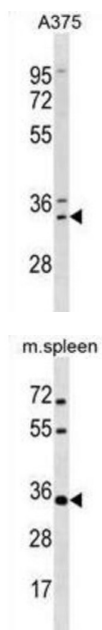
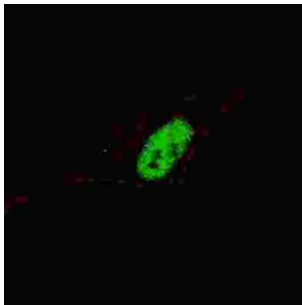


## Homeobox Protein MSX-1 (MSX1) Antibody

Catalogue No.: abx030890



This gene encodes a member of the muscle segment homeobox gene family. The encoded protein functions as a transcriptional repressor during embryogenesis through interactions with components of the core transcription complex and other homeoproteins. It may also have roles in limb-pattern formation, craniofacial development, particularly odontogenesis, and tumor growth inhibition. Mutations in this gene, which was once known as homeobox 7, have been associated with nonsyndromic cleft lip with or without cleft palate 5, Witkop syndrome, Wolf-Hirschorn syndrome, and autosomal dominant hypodontia.

**Target:** Homeobox Protein MSX-1 (MSX1)

**Clonality:** Polyclonal

**Reactivity:** Human, Mouse

**Tested Applications:** ELISA, WB, IF/ICC

**Host:** Rabbit

# Datasheet

Version: 3.0.0  
Revision date: 29 Sep 2025



**Recommended dilutions:** WB: 1/1000, IF/ICC: 1/200. Optimal dilutions/concentrations should be determined by the end user.

<b>Conjugation:</b>	Unconjugated
<b>Immunogen:</b>	KLH-conjugated synthetic peptide between 111-138 amino acids from the Central region of human MSX1.
<b>Isotype:</b>	IgG
<b>Form:</b>	Liquid
<b>Purification:</b>	Purified through a protein A column, followed by peptide affinity purification.
<b>Storage:</b>	Aliquot and store at -20°C. Avoid repeated freeze/thaw cycles.
<b>UniProt Primary AC:</b>	P28360 ( <a href="#">UniProt</a> , <a href="#">ExPASy</a> )
<b>Gene Symbol:</b>	MSX1
<b>KEGG:</b>	hsa:4487
<b>String:</b>	<a href="#">9606.ENSP00000372170</a>
<b>Molecular Weight:</b>	Calculated MW: 31.5 kDa
<b>Buffer:</b>	PBS containing 0.09% sodium azide.
<b>Specificity:</b>	Predicted to react with Cow MSX1.
<b>Note:</b>	THIS PRODUCT IS FOR RESEARCH USE ONLY. NOT FOR USE IN DIAGNOSTIC, THERAPEUTIC OR COSMETIC PROCEDURES. NOT FOR HUMAN OR ANIMAL CONSUMPTION.