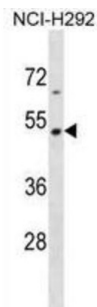


## Tektin 2 (TEKT2) Antibody

Catalogue No.: abx030908



This gene product belongs to the tektin family of proteins. Tektins comprise a family of filament-forming proteins that are coassembled with tubulins to form ciliary and flagellar microtubules. This gene is expressed in the testis and its protein is localized to the flagella of the sperms, indicating that it may play a role in spermatogenesis.

**Target:** Tektin 2 (TEKT2)

**Clonality:** Polyclonal

**Reactivity:** Human

**Tested Applications:** ELISA, WB

**Host:** Rabbit

**Recommended dilutions:** WB: 1/1000. Optimal dilutions/concentrations should be determined by the end user.

**Conjugation:** Unconjugated

**Immunogen:** KLH-conjugated synthetic peptide between 103-132 amino acids from the N-terminal region of human TEKT2.

**Isotype:** IgG

**Form:** Liquid

**Purification:** Purified through a protein A column, followed by peptide affinity purification.

**Storage:** Aliquot and store at -20°C. Avoid repeated freeze/thaw cycles.

**UniProt Primary AC:** Q9UIF3 ([UniProt](#), [ExPASy](#))

**Gene Symbol:** TEKT2

# Datasheet

Version: 4.0.0

Revision date: 12 Sep 2025



**String:** [9606.ENSPO0000207457](#)

**Molecular Weight:** Calculated MW: 49.7 kDa

**Buffer:** PBS containing 0.09% sodium azide.

**Specificity:** Predicted to react with Rat, Cow and Monkey TEK2.

**Note:** THIS PRODUCT IS FOR RESEARCH USE ONLY. NOT FOR USE IN DIAGNOSTIC, THERAPEUTIC OR COSMETIC PROCEDURES. NOT FOR HUMAN OR ANIMAL CONSUMPTION.

For Reference Only