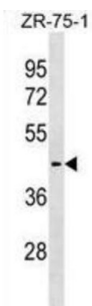


Solute Carrier Family 30, Member 10 (SLC30A10) Antibody

Catalogue No.: abx030915



Zinc functions as a cofactor for numerous enzymes, nuclear factors, and hormones and as an intra and intercellular signal ion. Members of the zinc transporter (ZNT) /SLC30 subfamily of the cation diffusion facilitator family, such as SLC30A10, permit cellular efflux of zinc (Seve et al., 2004 [PubMed 15154973]).

Target:	Solute Carrier Family 30, Member 10 (SLC30A10)
Clonality:	Polyclonal
Reactivity:	Human
Tested Applications:	ELISA, WB
Host:	Rabbit
Recommended dilutions:	WB: 1/1000. Optimal dilutions/concentrations should be determined by the end user.
Conjugation:	Unconjugated
Immunogen:	KLH-conjugated synthetic peptide between 331-359 amino acids from the C-terminal region of human SLC30A10.
Isotype:	IgG
Form:	Liquid
Purification:	Purified through a protein A column, followed by peptide affinity purification.
Storage:	Aliquot and store at -20°C. Avoid repeated freeze/thaw cycles.
UniProt Primary AC:	Q6XR72 (UniProt , ExPASy)
Gene Symbol:	SLC30A10

Datasheet

Version: 2.0.0

Revision date: 19 Mar 2025



KEGG: hsa:55532

String: [9606.ENSP00000355893](#)

Molecular Weight: Calculated MW: 52.7 kDa

Buffer: PBS containing 0.09% sodium azide.

Note: THIS PRODUCT IS FOR RESEARCH USE ONLY. NOT FOR USE IN DIAGNOSTIC, THERAPEUTIC OR COSMETIC PROCEDURES. NOT FOR HUMAN OR ANIMAL CONSUMPTION.

For Reference Only