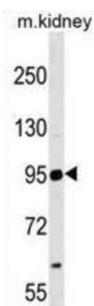


Neural Cell Adhesion Molecule 2 (NCAM2) Antibody

Catalogue No.: abx030926



The protein encoded by this gene belongs to the immunoglobulin superfamily. It is a type I membrane protein and may function in selective fasciculation and zone-to-zone projection of the primary olfactory axons.

Target:	Neural Cell Adhesion Molecule 2 (NCAM2)
Clonality:	Polyclonal
Reactivity:	Human, Mouse
Tested Applications:	ELISA, WB
Host:	Rabbit
Recommended dilutions:	WB: 1/1000. Optimal dilutions/concentrations should be determined by the end user.
Conjugation:	Unconjugated
Immunogen:	KLH-conjugated synthetic peptide between 620-649 amino acids from the Central region of human NCAM2.
Isotype:	IgG
Form:	Liquid
Purification:	Purified through a protein A column, followed by peptide affinity purification.
Storage:	Aliquot and store at -20°C. Avoid repeated freeze/thaw cycles.
UniProt Primary AC:	O15394 (UniProt , ExPASy)
Gene Symbol:	NCAM2

Datasheet

Version: 3.0.0

Revision date: 22 Aug 2025



KEGG: hsa:4685

String: [9606.ENSP00000383392](#)

Molecular Weight: Calculated MW: 93 kDa

Buffer: PBS containing 0.09% sodium azide.

Note: THIS PRODUCT IS FOR RESEARCH USE ONLY. NOT FOR USE IN DIAGNOSTIC, THERAPEUTIC OR COSMETIC PROCEDURES. NOT FOR HUMAN OR ANIMAL CONSUMPTION.

For Reference Only