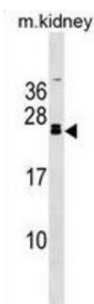


Fibroblast Growth Factor 20 (FGF20) Antibody

Catalogue No.: abx030927



The protein encoded by this gene is a member of the fibroblast growth factor family. The fibroblast growth factors possess broad mitogenic and cell survival activities, and are involved in a variety of biological processes including embryonic development, cell growth, morphogenesis, tissue repair, tumor growth and invasion. This gene product is a secreted neurotrophic factor but lacks a typical signal peptide. It is expressed in normal brain, particularly the cerebellum, and may regulate central nervous system development and function. Homodimerization of this protein was shown to regulate its receptor binding activity and concentration gradient in the extracellular matrix. Genetic variations of this gene have been associated with Parkinson disease susceptibility.

Target: Fibroblast Growth Factor 20 (FGF20)

Clonality: Polyclonal

Reactivity: Mouse

Tested Applications: ELISA, WB

Host: Rabbit

Recommended dilutions: WB: 1/1000. Optimal dilutions/concentrations should be determined by the end user.

Conjugation: Unconjugated

Immunogen: KLH-conjugated synthetic peptide between 136-165 amino acids from the C-terminal region of human FGF20.

Isotype: IgG

Form: Liquid

Purification: Purified through a protein A column, followed by peptide affinity purification.

Storage: Aliquot and store at -20°C. Avoid repeated freeze/thaw cycles.

Datasheet

Version: 3.0.0
Revision date: 07 Oct 2025



UniProt Primary AC: Q9NP95 ([UniProt](#), [ExPASy](#))

Gene Symbol: FGF20

GeneID: [26281](#)

OMIM: [605558](#)

HGNC: 3677

Ensembl: ENSG00000078579

String: [9606.ENSP00000180166](#)

Molecular Weight: Calculated MW: 23.5 kDa

Buffer: PBS containing 0.09% sodium azide.

Specificity: Predicted to react with Rat FGF20.

Note: THIS PRODUCT IS FOR RESEARCH USE ONLY. NOT FOR USE IN DIAGNOSTIC, THERAPEUTIC OR COSMETIC PROCEDURES. NOT FOR HUMAN OR ANIMAL CONSUMPTION.

For Reference Only