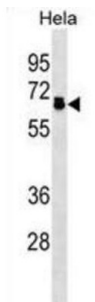


Protein Phosphatase 2 Regulatory Subunit B'Delta (PPP2R5D) Antibody

Catalogue No.: abx030941



The product of this gene belongs to the phosphatase 2A regulatory subunit B family. Protein phosphatase 2A is one of the four major Ser/Thr phosphatases, and it is implicated in the negative control of cell growth and division. It consists of a common heteromeric core enzyme, which is composed of a catalytic subunit and a constant regulatory subunit, that associates with a variety of regulatory subunits. The B regulatory subunit might modulate substrate selectivity and catalytic activity. This gene encodes a delta isoform of the regulatory subunit B56 subfamily. Alternatively spliced transcript variants encoding different isoforms have been identified.

Target:	Protein Phosphatase 2 Regulatory Subunit B'Delta (PPP2R5D)
Clonality:	Polyclonal
Reactivity:	Human
Tested Applications:	ELISA, WB
Host:	Rabbit
Recommended dilutions:	WB: 1/1000. Optimal dilutions/concentrations should be determined by the end user.
Conjugation:	Unconjugated
Immunogen:	KLH-conjugated synthetic peptide between 63-91 amino acids from the N-terminal region of human PPP2R5D.
Isotype:	IgG
Form:	Liquid
Purification:	Purified through a protein A column, followed by peptide affinity purification.
Storage:	Aliquot and store at -20°C. Avoid repeated freeze/thaw cycles.

Datasheet

Version: 4.0.0
Revision date: 15 Jul 2025



UniProt Primary AC: Q14738 ([UniProt](#), [ExPASy](#))

KEGG: hsa:5528

String: [9606.ENSP00000417963](#)

Molecular Weight: Calculated MW: 70 kDa

Buffer: PBS containing 0.09% sodium azide.

Specificity: Predicted to react with Rabbit PPP2R5D.

Note: THIS PRODUCT IS FOR RESEARCH USE ONLY. NOT FOR USE IN DIAGNOSTIC, THERAPEUTIC OR COSMETIC PROCEDURES. NOT FOR HUMAN OR ANIMAL CONSUMPTION.

For Reference Only