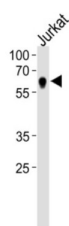
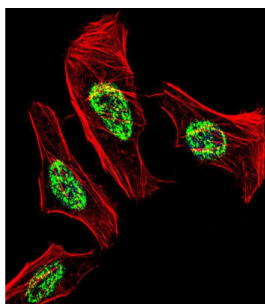


Nuclear Receptor Subfamily 2 Group C Member 2 (NR2C2) Antibody

Catalogue No.: abx030944



Members of the nuclear hormone receptor family, such as NR2C2, act as ligand-activated transcription factors. The proteins have an N-terminal transactivation domain, a central DNA-binding domain with 2 zinc fingers, and a ligand-binding domain at the C terminus. The activated receptor/ligand complex is translocated to the nucleus where it binds to hormone response elements of target genes (Yoshikawa et al., 1996 [PubMed 8661150]).

Target: Nuclear Receptor Subfamily 2 Group C Member 2 (NR2C2)

Clonality: Polyclonal

Reactivity: Human

Tested Applications: ELISA, WB, IF/ICC

Host: Rabbit

Recommended dilutions: WB: 1/1000, IF/ICC: 1/10 - 1/50. Optimal dilutions/concentrations should be determined by the end user.

Conjugation: Unconjugated

Immunogen: KLH-conjugated synthetic peptide between 438-466 amino acids from the C-terminal region of human NR2C2.

Isotype: IgG

Datasheet

Version: 3.0.0

Revision date: 19 Jun 2025



Form:	Liquid
Purification:	Purified through a protein A column, followed by peptide affinity purification.
Storage:	Aliquot and store at -20°C. Avoid repeated freeze/thaw cycles.
UniProt Primary AC:	P49116 (UniProt , ExPASy)
NCBI Accession:	NP_003289.2
KEGG:	hsa:7182
String:	9606.ENSP00000483059
Molecular Weight:	Calculated MW: 65.4 kDa
Buffer:	PBS containing 0.09% sodium azide.
Specificity:	Predicted to react with Mouse and Rat NR2C2.
Note:	THIS PRODUCT IS FOR RESEARCH USE ONLY. NOT FOR USE IN DIAGNOSTIC, THERAPEUTIC OR COSMETIC PROCEDURES. NOT FOR HUMAN OR ANIMAL CONSUMPTION.

For Reference Only