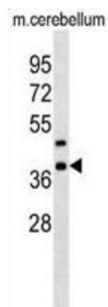


Crk-Like Protein (CRKL) Antibody

Catalogue No.: abx030947



Crkl may mediate the transduction of intracellular signals.

Target: Crk-Like Protein (CRKL)

Clonality: Polyclonal

Reactivity: Mouse

Tested Applications: ELISA, WB

Host: Rabbit

Recommended dilutions: WB: 1/1000. Optimal dilutions/concentrations should be determined by the end user.

Conjugation: Unconjugated

Immunogen: KLH-conjugated synthetic peptide between 275-303 amino acids from the C-terminal region of mouse Crkl.

Isotype: IgG

Form: Liquid

Purification: Purified through a protein A column, followed by peptide affinity purification.

Storage: Aliquot and store at -20°C. Avoid repeated freeze/thaw cycles.

UniProt Primary AC: P47941 ([UniProt](#), [ExPASy](#))

KEGG: mmu:12929

String: [10090.ENSMUSP00000006293](#)

Datasheet

Version: 4.0.0

Revision date: 29 Jun 2025



Molecular Weight: Calculated MW: 33.8 kDa

Buffer: PBS containing 0.09% sodium azide.

Specificity: Predicted to react with Rat Crkl.

Note: THIS PRODUCT IS FOR RESEARCH USE ONLY. NOT FOR USE IN DIAGNOSTIC, THERAPEUTIC OR COSMETIC PROCEDURES. NOT FOR HUMAN OR ANIMAL CONSUMPTION.

For Reference Only