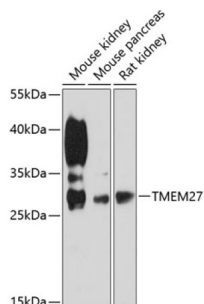


Transmembrane Protein 27 (TMEM27) Antibody

Catalogue No.: abx002497



Western blot analysis of extracts of various cell lines using TMEM27 Antibody (1/3000 dilution).

TMEM27 Antibody is a Rabbit Polyclonal antibody against TMEM27. This gene encodes a type 1 transmembrane protein that is important for trafficking amino acid transporters to the apical brush border of proximal tubules. The encoded protein binds to amino acid transporters and regulates their expression on the plasma membrane. It also plays a role in controlling insulin exocytosis by regulating formation of the SNARE (soluble N-ethylmaleimide-sensitive-factor attachment protein receptor) complex in pancreatic beta cells. The extracellular domain of the encoded protein may be cleaved and shed from the plasma membrane specifically in pancreatic beta cells.

Target:	Transmembrane Protein 27 (TMEM27)
Clonality:	Polyclonal
Reactivity:	Mouse, Rat
Tested Applications:	WB
Host:	Rabbit
Recommended dilutions:	WB: 1/500 - 1/2000. Optimal dilutions/concentrations should be determined by the end user.
Conjugation:	Unconjugated
Immunogen:	Recombinant fusion protein corresponding to human TMEM27
Isotype:	IgG
Form:	Liquid
Purification:	Purified by affinity chromatography.
Storage:	Aliquot and store at -20°C. Avoid repeated freeze/thaw cycles.
UniProt Primary AC:	Q9HBJ8 (UniProt , ExPASy)

Datasheet

Version: 5.0.0
Revision date: 06 Mar 2025



Gene Symbol: CLTRN

GeneID: [57393](#)

NCBI Accession: NP_065716.1

String: [9606.ENSP00000369699](#)

Molecular Weight: Calculated MW: 25 kDa
Observed MW: 29 kDa

Buffer: PBS, pH 7.3, containing 0.01% thiomersal, 50% glycerol.

Concentration: 1 mg/ml

Note: THIS PRODUCT IS FOR RESEARCH USE ONLY. NOT FOR USE IN DIAGNOSTIC, THERAPEUTIC OR COSMETIC PROCEDURES. NOT FOR HUMAN OR ANIMAL CONSUMPTION.

For Reference Only