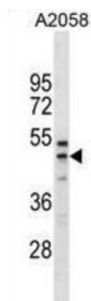


Ring Finger And FYVE Like Domain Containing E3 Ubiquitin Protein Ligase (RFFL) Antibody

Catalogue No.: abx031019



RFFL has E3 ubiquitin protein ligase activity. Regulates the levels of CASP8 and CASP10 by targeting them for proteasomal degradation. Has anti-apoptotic activity. May bind phosphatidylinositol phosphates.

Target:	Ring Finger And FYVE Like Domain Containing E3 Ubiquitin Protein Ligase (RFFL)
Clonality:	Polyclonal
Reactivity:	Human
Tested Applications:	ELISA, WB
Host:	Rabbit
Recommended dilutions:	WB: 1/1000. Optimal dilutions/concentrations should be determined by the end user.
Conjugation:	Unconjugated
Immunogen:	KLH-conjugated synthetic peptide between 265-294 amino acids from the C-terminal region of human RFFL.
Isotype:	IgG
Form:	Liquid
Purification:	Purified through a protein A column, followed by peptide affinity purification.
Storage:	Aliquot and store at -20°C. Avoid repeated freeze/thaw cycles.
UniProt Primary AC:	Q8WZ73 (UniProt , ExPASy)
Gene Symbol:	RFFL

Datasheet

Version: 4.0.0

Revision date: 03 Oct 2025



KEGG: hsa:117584

String: [9606.ENSP00000326170](#)

Molecular Weight: Calculated MW: 40.5 kDa

Buffer: PBS containing 0.09% sodium azide.

Specificity: Predicted to react with Mouse and Rat RFFL.

Note: THIS PRODUCT IS FOR RESEARCH USE ONLY. NOT FOR USE IN DIAGNOSTIC, THERAPEUTIC OR COSMETIC PROCEDURES. NOT FOR HUMAN OR ANIMAL CONSUMPTION.

For Reference Only