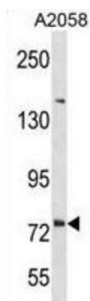


Delta And Notch-Like Epidermal Growth Factor-Related Receptor (DNER) Antibody

Catalogue No.: abx031031



Activator of the NOTCH1 pathway. May mediate neuron-glia interaction during astrocytogenesis (By similarity).

Target:	Delta And Notch-Like Epidermal Growth Factor-Related Receptor (DNER)
Clonality:	Polyclonal
Reactivity:	Human
Tested Applications:	ELISA, WB
Host:	Rabbit
Recommended dilutions:	WB: 1/1000. Optimal dilutions/concentrations should be determined by the end user.
Conjugation:	Unconjugated
Immunogen:	KLH-conjugated synthetic peptide between 708-736 amino acids from the C-terminal region of human DNER.
Isotype:	IgG
Form:	Liquid
Purification:	Purified through a protein A column, followed by peptide affinity purification.
Storage:	Aliquot and store at -20°C. Avoid repeated freeze/thaw cycles.
UniProt Primary AC:	Q8NFT8 (UniProt , ExPASy)
Gene Symbol:	DNER

Datasheet

Version: 4.0.0

Revision date: 06 Jun 2025



KEGG: hsa:92737

String: [9606.ENSP00000345229](#)

Molecular Weight: Calculated MW: 78.5 kDa

Buffer: PBS containing 0.09% sodium azide.

Specificity: Predicted to react with Mouse DNER.

Note: THIS PRODUCT IS FOR RESEARCH USE ONLY. NOT FOR USE IN DIAGNOSTIC, THERAPEUTIC OR COSMETIC PROCEDURES. NOT FOR HUMAN OR ANIMAL CONSUMPTION.

For Reference Only