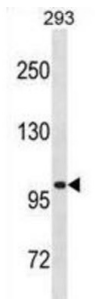


Volume-Regulated Anion Channel Subunit LRRC8A (LRRC8A) Antibody

Catalogue No.: abx031061



This gene encodes a protein belonging to the leucine-rich repeat family of proteins, which are involved in diverse biological processes, including cell adhesion, cellular trafficking, and hormone-receptor interactions. This family member is a putative four-pass transmembrane protein that plays a role in B cell development. Defects in this gene cause autosomal dominant non-Bruton type agammaglobulinemia, an immunodeficiency disease resulting from defects in B cell maturation. Multiple alternatively spliced transcript variants, which encode the same protein, have been identified for this gene.

Target:	Volume-Regulated Anion Channel Subunit LRRC8A (LRRC8A)
Clonality:	Polyclonal
Reactivity:	Human, Mouse
Tested Applications:	ELISA, WB
Host:	Rabbit
Recommended dilutions:	WB: 1/2000. Optimal dilutions/concentrations should be determined by the end user.
Conjugation:	Unconjugated
Immunogen:	KLH-conjugated synthetic peptide between 782-810 amino acids from the C-terminal region of human LRRC8A.
Isotype:	IgG
Form:	Liquid
Purification:	Purified through a protein A column, followed by peptide affinity purification.
Storage:	Aliquot and store at -20°C. Avoid repeated freeze/thaw cycles.
UniProt Primary AC:	Q8IWT6 (UniProt , ExPASy)

Datasheet

Version: 2.0.0

Revision date: 26 Aug 2025



Gene Symbol: LRRC8A

KEGG: hsa:56262

String: [9606.ENSP00000259324](#)

Molecular Weight: Calculated MW: 94.2 kDa

Buffer: PBS containing 0.09% sodium azide.

Specificity: Predicted to react with Rat LRRC8A.

Note: THIS PRODUCT IS FOR RESEARCH USE ONLY. NOT FOR USE IN DIAGNOSTIC, THERAPEUTIC OR COSMETIC PROCEDURES. NOT FOR HUMAN OR ANIMAL CONSUMPTION.

For Reference Only