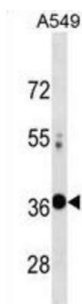


Ventral Anterior Homeobox 2 (VAX2) Antibody

Catalogue No.: abx031082



This gene encodes a homeobox protein and is almost exclusively expressed in the ventral portion of the retina during development. In mouse studies, this gene was found to be required for the correct formation of the optic fissure and other aspects of retinal development.

Target: Ventral Anterior Homeobox 2 (VAX2)

Clonality: Polyclonal

Reactivity: Human

Tested Applications: ELISA, WB

Host: Rabbit

Recommended dilutions: WB: 1/1000. Optimal dilutions/concentrations should be determined by the end user.

Conjugation: Unconjugated

Immunogen: KLH-conjugated synthetic peptide between 138-166 amino acids from the Central region of human VAX2.

Isotype: IgG

Form: Liquid

Purification: Purified through a protein A column, followed by peptide affinity purification.

Storage: Aliquot and store at -20°C. Avoid repeated freeze/thaw cycles.

UniProt Primary AC: Q9UIW0 ([UniProt](#), [ExPASy](#))

Gene Symbol: VAX2

Datasheet

Version: 4.0.0

Revision date: 31 Aug 2025



String: [9606.ENSPO0000234392](#)

Molecular Weight: Calculated MW: 30.9 kDa

Buffer: PBS containing 0.09% sodium azide.

Specificity: Predicted to react with Mouse and Rat VAX2.

Note: THIS PRODUCT IS FOR RESEARCH USE ONLY. NOT FOR USE IN DIAGNOSTIC, THERAPEUTIC OR COSMETIC PROCEDURES. NOT FOR HUMAN OR ANIMAL CONSUMPTION.

For Reference Only