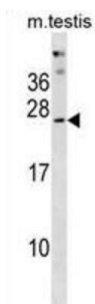


Pyridoxal Phosphate Phosphatase PHOSPHO2 (PHOSPHO2) Antibody

Catalogue No.: abx031091



Phosphatase that has high activity toward pyridoxal 5'-phosphate (PLP). Also active at much lower level toward pyrophosphate, phosphoethanolamine (PEA), phosphocholine (PCho), phospho-L-tyrosine, fructose-6-phosphate, p-nitrophenyl phosphate, and D-glycerophosphate.

Target: Pyridoxal Phosphate Phosphatase PHOSPHO2 (PHOSPHO2)

Clonality: Polyclonal

Reactivity: Human, Mouse

Tested Applications: ELISA, WB

Host: Rabbit

Recommended dilutions: WB: 1/1000. Optimal dilutions/concentrations should be determined by the end user.

Conjugation: Unconjugated

Immunogen: KLH-conjugated synthetic peptide between 12-40 amino acids from the N-terminal region of human PHOSPHO2.

Isotype: IgG

Form: Liquid

Purification: Purified through a protein A column, followed by peptide affinity purification.

Storage: Aliquot and store at -20°C. Avoid repeated freeze/thaw cycles.

UniProt Primary AC: Q8TCD6 ([UniProt](#), [ExPASy](#))

Gene Symbol: PHOSPHO2

Datasheet

Version: 3.0.0

Revision date: 21 Jul 2025



KEGG: hsa:493911

String: [9606.ENSP00000481046](#)

Molecular Weight: Calculated MW: 27.8 kDa

Buffer: PBS containing 0.09% sodium azide.

Note: THIS PRODUCT IS FOR RESEARCH USE ONLY. NOT FOR USE IN DIAGNOSTIC, THERAPEUTIC OR COSMETIC PROCEDURES. NOT FOR HUMAN OR ANIMAL CONSUMPTION.

For Reference Only