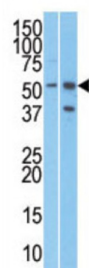


URI1, Prefoldin Like Chaperone (URI1) Antibody

Catalogue No.: abx031110



The protein encoded by this gene binds to RNA polymerase II subunit 5 (RPB5) and negatively modulates transcription through its binding to RPB5. The encoded protein seems to have inhibitory effects on various types of activated transcription, but it requires the RPB5-binding region. This protein acts as a corepressor. It is suggested that it may require signaling processes for its function or that it negatively modulates genes in the chromatin structure. Two alternatively spliced transcript variants encoding different isoforms have been described for this gene.

Target:	URI1, Prefoldin Like Chaperone (URI1)
Clonality:	Polyclonal
Reactivity:	Human
Tested Applications:	ELISA, WB
Host:	Rabbit
Recommended dilutions:	WB: 1/1000. Optimal dilutions/concentrations should be determined by the end user.
Conjugation:	Unconjugated
Immunogen:	KLH-conjugated synthetic peptide between 347-376 amino acids from the C-terminal region of human RMP (URI).
Isotype:	IgG
Form:	Liquid
Purification:	Purified through a protein G column, eluted with high and low pH buffers and neutralized immediately, followed by dialysis against PBS.
Storage:	Aliquot and store at -20°C. Avoid repeated freeze/thaw cycles.
UniProt Primary AC:	O94763 (UniProt , ExPASy)

Datasheet

Version: 3.0.0

Revision date: 01 Sep 2025



KEGG: hsa:8725

String: [9606.ENSP00000376097](#)

Molecular Weight: Calculated MW: 59.8 kDa

Buffer: PBS containing 0.09% sodium azide.

Note: THIS PRODUCT IS FOR RESEARCH USE ONLY. NOT FOR USE IN DIAGNOSTIC, THERAPEUTIC OR COSMETIC PROCEDURES. NOT FOR HUMAN OR ANIMAL CONSUMPTION.

For Reference Only