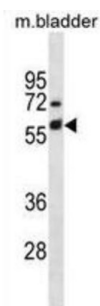


Mouse Krt6a Antibody

Catalogue No.: abx031155



Keratins 6 and 16 are expressed in keratinocytes, which are undergoing rapid turnover in the suprabasal region (also known as hyperproliferation related keratins). Keratin 6 is found in hair follicles, neck squamous cell carcinomas, suprabasal cells of a variety of internal stratified epithelia, in epidermis, in both normal and hyperproliferative situations. Epidermal injury results in activation of keratinocytes which express CK6 and CK16. CK6 is strongly expressed in about 75% of head and neck squamous cell carcinomas. Expression of CK6 is particularly associated with differentiation. There are at least six isoforms of human type II keratin 6 (K6), K6A being the most abundant representing about 77% of all forms found in epithelia.

| | |
|-------------------------------|--|
| Target: | Mouse Krt6a |
| Clonality: | Polyclonal |
| Reactivity: | Mouse |
| Tested Applications: | ELISA, WB |
| Host: | Rabbit |
| Recommended dilutions: | WB: 1/1000. Optimal dilutions/concentrations should be determined by the end user. |
| Conjugation: | Unconjugated |
| Immunogen: | KLH-conjugated synthetic peptide between 212-240 amino acids from the Central region of mouse Krt6a. |
| Isotype: | IgG |
| Form: | Liquid |
| Purification: | Purified through a protein A column, followed by peptide affinity purification. |
| Storage: | Aliquot and store at -20°C. Avoid repeated freeze/thaw cycles. |
| UniProt Primary AC: | P50446 (UniProt , ExPASy) |

Datasheet

Version: 2.0.0

Revision date: 15 Jun 2025



KEGG: mmu:16687

String: [10090.ENSMUSP00000023788](#)

Molecular Weight: Calculated MW: 59.3 kDa

Buffer: PBS containing 0.09% sodium azide.

Note: THIS PRODUCT IS FOR RESEARCH USE ONLY. NOT FOR USE IN DIAGNOSTIC, THERAPEUTIC OR COSMETIC PROCEDURES. NOT FOR HUMAN OR ANIMAL CONSUMPTION.

For Reference Only