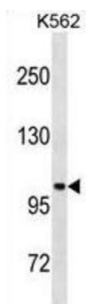


## StAR-Related Lipid Transfer Protein 13 (STARD13) Antibody

Catalogue No.: abx031158



This gene encodes a protein that contains a sterile alpha motif domain in the N-terminus, an ATP/GTP-binding motif, a GTPase-activating protein domain, and a STAR-related lipid transfer domain in the C-terminus. The gene is located in a region of chromosome 13 that has loss of heterozygosity in hepatic cancer. At least three alternatively spliced transcript variants have been described for this gene.

<b>Target:</b>	StAR-Related Lipid Transfer Protein 13 (STARD13)
<b>Clonality:</b>	Polyclonal
<b>Reactivity:</b>	Human
<b>Tested Applications:</b>	ELISA, WB
<b>Host:</b>	Rabbit
<b>Recommended dilutions:</b>	WB: 1/1000. Optimal dilutions/concentrations should be determined by the end user.
<b>Conjugation:</b>	Unconjugated
<b>Immunogen:</b>	KLH-conjugated synthetic peptide between 544-573 amino acids from the Central region of human STARD13.
<b>Isotype:</b>	IgG
<b>Form:</b>	Liquid
<b>Purification:</b>	Purified through a protein A column, followed by peptide affinity purification.
<b>Storage:</b>	Aliquot and store at -20°C. Avoid repeated freeze/thaw cycles.
<b>UniProt Primary AC:</b>	Q9Y3M8 ( <a href="#">UniProt</a> , <a href="#">ExPASy</a> )
<b>Gene Symbol:</b>	STARD13

# Datasheet

Version: 4.0.0

Revision date: 16 Mar 2025



**String:** [9606.ENSF00000338785](#)

**Molecular Weight:** Calculated MW: 125 kDa

**Buffer:** PBS containing 0.09% sodium azide.

**Note:** THIS PRODUCT IS FOR RESEARCH USE ONLY. NOT FOR USE IN DIAGNOSTIC, THERAPEUTIC OR COSMETIC PROCEDURES. NOT FOR HUMAN OR ANIMAL CONSUMPTION.

For Reference Only