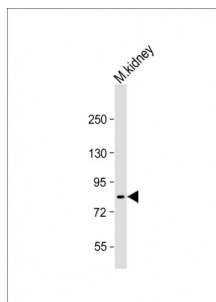
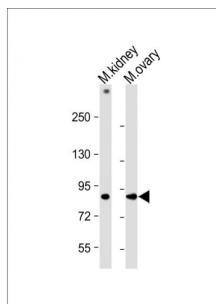


Prolyl Endopeptidase FAP (FAP) Antibody

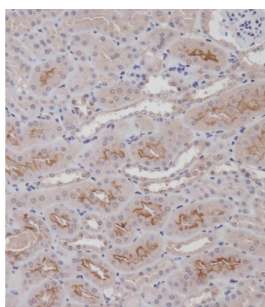
Catalogue No.: abx031162



Western blot analysis of Mouse kidney tissue (20 µg/lane) using Prolyl Endopeptidase FAP (FAP) Antibody (1/2000 dilution) and HRP-conjugated Goat Anti-Rabbit IgG H+L Antibody (1/10000 dilution). Samples were blocked and diluted with 5% NFDM/TBST. Calculated MW: 88 kDa.



Western blot analysis of Mouse kidney (Lane 1) and ovary (Lane 2) tissues (20 µg/lane) using Prolyl Endopeptidase FAP (FAP) Antibody (1/500 dilution) and HRP-conjugated Goat Anti-Rabbit IgG H+L Antibody (1/10000 dilution). Samples were blocked and diluted with 5% NFDM/TBST. Calculated MW: 88 kDa.



Immunohistochemistry analysis of paraffin-embedded Mouse kidney tissue using Prolyl Endopeptidase FAP (FAP) Antibody (1/100 dilution, 1 hour, room temperature) and CRF Anti-Polyvalent HRP Polymer secondary antibody (undiluted). Heat-induced antigen retrieval was carried out in EDTA buffer, pH 9.0, prior to staining.

Prolyl Endopeptidase FAP (FAP) Antibody is a rabbit polyclonal antibody for the detection of FAP. In association with DPP4 is involved in the pericellular proteolysis of the extracellular matrix (ECM), the migration and invasion of endothelial cells into the ECM (By similarity). May have a role in tissue remodeling during development and wound healing, and contribute to invasiveness in malignant cancers.

Target: Prolyl Endopeptidase FAP (FAP)

Clonality: Polyclonal

Reactivity: Mouse

Tested Applications: ELISA, WB, IHC

Host: Rabbit

Recommended dilutions: WB: 1/500, IHC-P: 1/100. Not tested in IHC-F. Optimal dilutions/concentrations should be determined by the end user.

Datasheet

Version: 3.0.0
Revision date: 19 Jul 2025



| | |
|----------------------------|--|
| Conjugation: | Unconjugated |
| Immunogen: | KLH-conjugated synthetic peptide between 15-41 amino acids from the N-terminal region of mouse Fap. |
| Isotype: | IgG |
| Form: | Liquid |
| Purification: | Purified through a protein A column, followed by peptide affinity purification. |
| Storage: | Aliquot and store at -20°C. Avoid repeated freeze/thaw cycles. |
| UniProt Primary AC: | P97321 (UniProt , ExPASy) |
| KEGG: | mmu:14089 |
| String: | 10090.ENSMUSP00000099793 |
| Molecular Weight: | Calculated MW: 87.9 kDa |
| Buffer: | PBS containing 0.09% sodium azide. |
| Concentration: | 0.4 mg/ml |
| Note: | THIS PRODUCT IS FOR RESEARCH USE ONLY. NOT FOR USE IN DIAGNOSTIC, THERAPEUTIC OR COSMETIC PROCEDURES. NOT FOR HUMAN OR ANIMAL CONSUMPTION. |