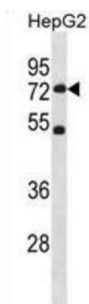


SET Domain Containing 3 (SETD3) Antibody

Catalogue No.: abx031188



SETD3 contains 1 SET domain. The function of the SETD3 protein remains unknown. There are 3 isoforms produced by alternative splicing.

Target: SET Domain Containing 3 (SETD3)

Clonality: Polyclonal

Reactivity: Human

Tested Applications: ELISA, WB

Host: Rabbit

Recommended dilutions: WB: 1/1000. Optimal dilutions/concentrations should be determined by the end user.

Conjugation: Unconjugated

Immunogen: KLH-conjugated synthetic peptide between 556-585 amino acids from the C-terminal region of human SETD3.

Isotype: IgG

Form: Liquid

Purification: Purified through a protein A column, followed by peptide affinity purification.

Storage: Aliquot and store at -20°C. Avoid repeated freeze/thaw cycles.

UniProt Primary AC: Q86TU7 ([UniProt](#), [ExPASy](#))

Gene Symbol: SETD3

Datasheet

Version: 2.0.0

Revision date: 13 Aug 2025



KEGG: hsa:84193

String: [9606.ENSP00000327436](#)

Molecular Weight: Calculated MW: 67.3 kDa

Buffer: PBS containing 0.09% sodium azide.

Note: THIS PRODUCT IS FOR RESEARCH USE ONLY. NOT FOR USE IN DIAGNOSTIC, THERAPEUTIC OR COSMETIC PROCEDURES. NOT FOR HUMAN OR ANIMAL CONSUMPTION.

For Reference Only